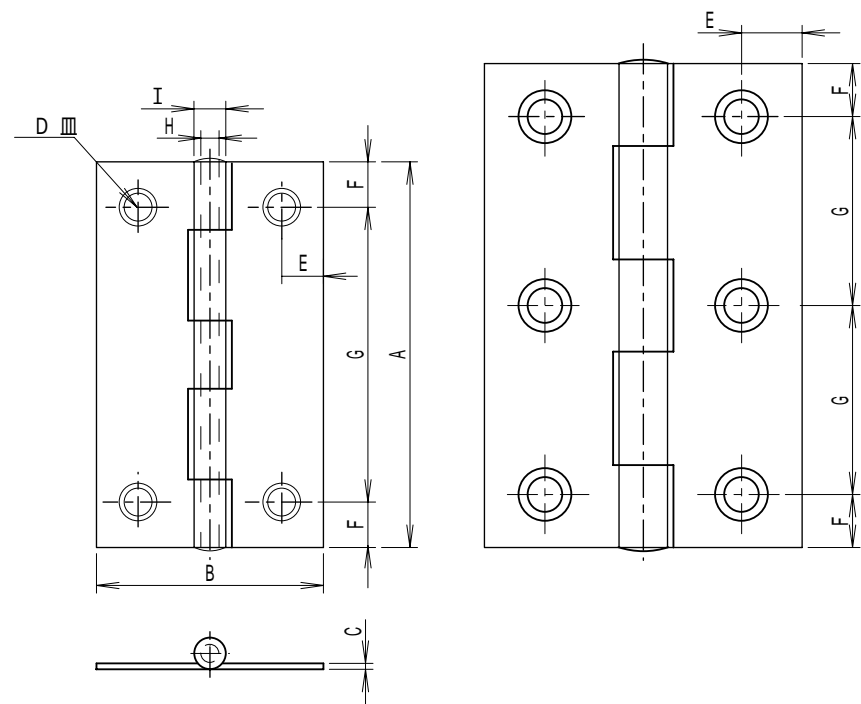
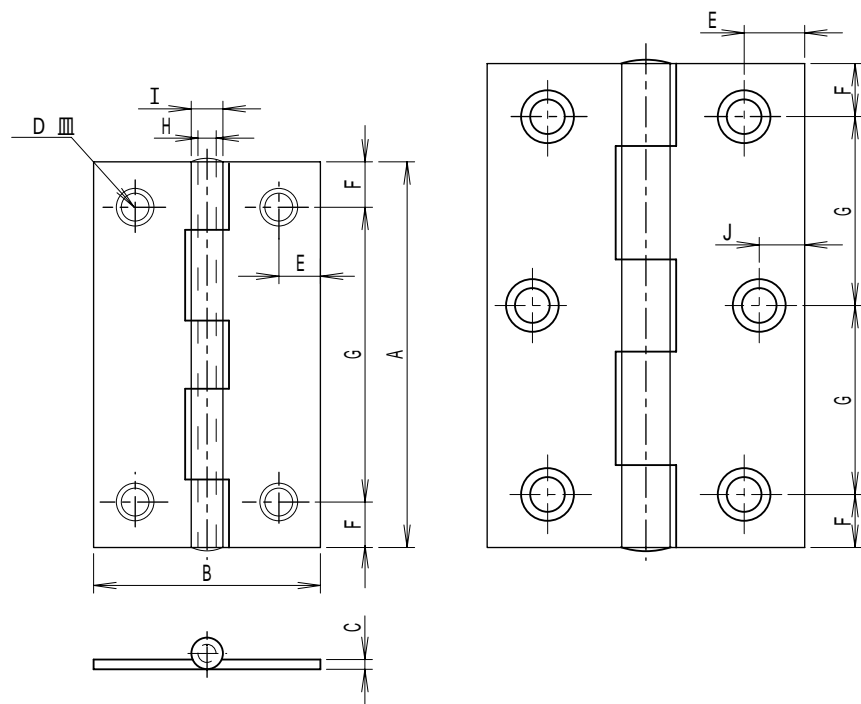


NSB平蝶番 (薄口・厚口)



NSB-厚口

NSB80・88 寸法 (mm)									
A	B	C	D	E	F	G	H	I	J
3.8mm	34	1.2	3.9	6.0	6.0	26	3.1	5.7	-
5.1mm	38	1.3	3.9	7.0	7.5	36	3.4	6.1	-
6.4mm	42	1.4	4.6	8.0	7.0	25	3.4	6.4	6.0
7.6mm	49	1.5	5.0	9.0	9.0	29	4.2	7.4	7.0
8.9mm	56	1.7	5.3	10.5	10.5	34	5.2	8.8	7.5
10.2mm	70	1.8	5.9	14.0	9.0	28	5.6	9.4	9.0
12.7mm	80	2.1	6.3	16.0	11.0	35	7.6	11.9	10.5
15.3mm	100	2.3	6.3	22.0	12.0	43	7.6	12.3	12.0

NSB-薄口

NSB50・55 寸法 (mm)								
A	B	C	D	E	F	G	H	I
2.5mm	20	0.8	3.4	3.5	3.5	18.0	2.1	3.8
3.2mm	22	0.8	3.4	4.0	4.0	24.0	2.1	3.8
3.8mm	26	0.8	3.4	4.5	5.0	28.0	2.4	4.2
5.1mm	30	0.8	3.7	5.5	6.0	39.0	2.4	4.2
6.4mm	33	0.9	3.9	6.5	6.5	25.5	2.5	4.4
7.6mm	41	1.0	4.4	8.0	8.0	30.0	3.0	5.2

ケ-ス 材質：SPCC (生地)